



OUR SAVIOR'S LUTHERAN CHURCH
910 9th St, Menomonie, WI 54751

PARISH SCOPE

NEWSLETTER

AUGUST 2020

Pastor Heather T. Wigdahl
Pastor Sarah L. Miller

715-235-0693 x-203
715-235-0693 x-204


An update from Pastor Sarah:

“Blessed are the flexible for they shall not be broken.” I learned this particular beatitude from Pr. Michael Rehak who served as an interim pastor in Eau Claire. 2020 has stretched us and pulled us and tested our flexibility in so many ways — not just in the church but in most areas of our lives. But I am happy to say we here at OSL have not been broken! Throughout these months the Spirit has connected us in new ways and helped us figure out how to be the church while physically distanced from each other. We have continued to worship, to serve our neighbors in need, to study God’s Word, and to work for justice. While we long for the day when we can gather in person, we trust the Spirit to hold us together.

Throughout August we will continue to worship virtually through our radio broadcast, OSL podcast, and our OSL YouTube Channel. Be assured that your OSL staff and congregational leaders are monitoring the situation and developing plans for how and when we can return to in-person worship. The Children, Youth, and Family committee is working on plans for what Sunday School and Confirmation will look like in the fall. In the meantime, thank you for your flexibility, your patience, your support of our ministries and for all the ways in which you live out your faith, sharing God’s love in word and deed.

In Christ,
Pastor Sarah

WORSHIP OPPORTUNITIES



*The service is short
but gives us an
opportunity to begin
our day centered in
God's Word and in
prayer.*

Matins or Morning Prayer

Join Pastor Sarah for a summer midweek worship opportunity. On **Wednesday mornings**, Pastor Sarah will be leading Matins or Morning Prayer. We'll begin meeting via Zoom. There will be a time for fellowship starting at 8:45 am and Matins will begin at 9:00am. When conditions allow will look for ways to gather in-person. Contact [Pastor Sarah](#) for a link to the Zoom meeting.

Radio Broadcast

Radio Broadcast on AM880 WMEQ Sunday mornings at 10:40am.
Broadcasts are also available through [iHeartRadio](#) on AM880 WMEQ.

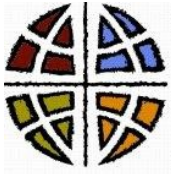
Online Worship Videos

Click here: [OSL Online Worship Video](#)

Online Worship Audio

Our Savior's Podcasts are available wherever you stream your favorite audio podcasts (Anchor, iTunes, Spotify, Google, etc.) — click here: [OSL Online Worship Audio](#)

COVID 19 Stimulus Check Appeal



Northwest Synod of Wisconsin Evangelical Lutheran Church in America God's work. Our hands.

COVID 19 Stimulus Check Appeal for ministries of the Northwest Synod of Wisconsin

August 1, 2020

Friends in Christ:

Over the past few months our lives have changed dramatically. Daily routines have been disrupted, new challenges have arisen. In spite of Covid 19, the ministry of the Northwest Synod of Wisconsin continues to be impactful, making a difference in the world for Jesus' sake. I am grateful for your generous prayerful and financial support of the work that we do together. **I invite you to join me and our synod council in continuing to support the synod's ministry with a special gift.** Perhaps you received a COVID stimulus check. For many this check was a blessing, a needed relief for those who had lost income. However, if you are able, I invite you to consider making a gift from those funds to support essential synod ministries. Consider these opportunities:

Give a gift to your home congregation

Give a gift that will keep on giving by donating to the
Synod Endowment Fund <http://nswsi.org/endowment-fund>

Give to the ongoing work of the NWSWI <http://nswsi.org/giving>

- Give to the synod's general fund
- **Give to our companion synod in Malawi**
- **Give to our synod's newest Latino/a ministry, Neighbor to Neighbor**

Give directly to one of our synod's ministries

- Bible Camps: Luther Park, Luther Point, Wapogasset, Amnicon
- Lutheran Campus Ministries: UW-Eau Claire, UW-Stout, UW-River Falls

As a Synod, we are making a difference for Jesus' sake

1. **The synod's capital campaign, endowment fund and staff helped congregations upgrade technology and provided assistance as nearly every congregation in the synod went to worship and meetings on line during the pandemic.**
2. **The synod ministers provided additional education, support, encouragement, and resources for both worship and faith formation to pastors, deacons, SAMS and congregations since March.**
3. **The synod has provided financial support to the Lutheran church in Malawi to help with flood relief and pastor's salaries during the pandemic.**

(Continued on page 4)

COVID 19 Stimulus Check Appeal Cont.

(Continued from page 3)

4. The synod's justice team has been meeting and working on video resources on racial, gender, environmental and hunger justice issues. The synod is launching a NEW Latinx racial justice ministry called Neighbor to Neighbor that will focus on connecting with our American Latinx neighbors.
5. **The Northwest Synod awarded small ELCA COVID 19 grants to our synod's Bible Camps and Lutheran Campus Ministries hit hard by loss of income during the pandemic.**

Thank you for your faithful partnership in ministry in the past! I invite you to join me and the members of the Northwest Wisconsin Synod Council in making a special gift to support the synod that will benefit the ministries of every congregation in NW Wisconsin as we move forward together in God's mission for the sake of the world.

Bishop Laurie Skow-Anderson

The Northwest Wisconsin Synod Council

Al Arndt, Vice President
Julie Brenden, Secretary
John Levi, Treasurer

Chequamegon Conference

Carol Lekies
Lyle Roe

Dairyland Conference

Reverend Rolf Morck
Kathy Boe

Lake Superior Conference

Reverend Paul Simmons
Tom Potterton

Apple River Conference

Reverend Marilyn Crossfield
Justin Swanson
Kim Patterson

Chippewa Valley Conference

Reverend Lucy Schottelkorb
Arvin Solsaa
Michelle Pride

Heart of the North Conference

Reverend Luci Sesvold
Ed Peters
Karyn Hullinger

St. Croix Valley Conference

Marcia Lindseth
Ralph Van Keulen

Therefore, since we are surrounded by so great a cloud of witnesses let us also lay aside every weight and the sin that clings so closely, and let us run with perseverance the race that is set before us, looking to Jesus the pioneer and perfecter of our faith, who for the sake of the joy that was set before him endured the cross, disregarding its shame and has taken his seat at the right hand of the throne of God. Hebrews 12:1-2

LUTHERAN CAMPUS MINISTRY

Pack The Park Update

An important message from Lutheran Campus Ministry and Christ, Peace and Our Savior's Lutheran Churches:

Our annual Pack the Park Outdoor Worship service and fundraising event has been CANCELLED for the 2020 year. This decision was made collectively due to concern for the health and safety of our congregations, the rising numbers of COVID-19, and CDC's recommendation against large gatherings.

We are saddened by this and will miss all the fun that we have at this event and look forward to having you at the event in August 2021!

Blessings, stay safe and healthy!

Katie Wagner
Director of Lutheran Campus Ministry



From Katie Wagner, LCM Director:

Good Morning!

I hope you all are doing well and staying safe and health.

I am reaching out to schedule our meals for our Monday night events for the Fall of 2020. This year we have implemented some changes to keep both the students and cooks safe given the rising numbers with COVID. If you have questions at all, please do not hesitate to contact me. This is new territory for all of us, so we will do the best we can with the circumstances we have.

I have the following dates available for this Fall. Please feel free to contact me via [email](#) or via phone (715-308-3393) with which date you would like! Thank you for your willingness to volunteer in the past. The students are so appreciative of the meals on Mondays and I know they will continue to appreciate it given all the changes they are facing at school and in the community.

Dates Available:	September 21	September 28	October 5
	October 12	October 19	October 26
	November 2	November 9	November 16
	November 23	November 30	December 7

OSL EVENTS

Annual Collection of School Bag Supplies



This year we will again be collecting school supplies for Lutheran World Relief school bags.

For **each** school bag we need the following supplies:

- 4—70 sheet notebooks
- 1—ruler: inches/centimeter
- 1—pencil sharpener
- 1 pair—blunt end scissors
- 5—unsharpened pencils
- 5—black or blue ink ballpoint pens
- 1—box 24 crayons
- 1—2 1/2" eraser

A collection container will be available at the back of the church Monday thru Thursday. Cash donations may be dropped off at the office.

Any donation will be greatly appreciated!

LUTHER PARK BIBLE CAMP



**POSTPONED TO A
NEW DATE**

Luther Park Bible Camp's
Heart for Luther Park



Join us in the new Ministry Center:

11:00 AM *Come and Browse!
*Silent Auction Bidding Starts

11:00 AM *Grilled Chicken Dinner
*Pie and Ice Cream *Camp Store

12:30 PM **Live Auction of Quilts and Crafts**
(Silent Auction Continues)

3:00 PM **Raffle Drawing**

Where Faith is Nurtured through Holy Play

**Sunday, September 27th
2020 Fundraising Event**

Event held at:
Camp's New Ministry Center
Luther Park Bible Camp
944 24 1/4 Street, Chetek
North of Chetek on Cty M
watch for the posted signs

715-859-2215
Website:
www.lutherpark.org

RAFFLE QUILTS

Every Ticket purchased is a winner
because you are supporting Luther
Park Bible Camp!



BEARS IN LUTHER WOODS
96 X 96 Made by Julia Accola
Valued at \$750.00
Quilt includes 2 matching pillow shams



WOMEN OF THE BIBLE
96 X 111 Made by Diana Thompson
Valued at \$2,500.00
Quilt includes a narrative for each block
(Based on Women of the Bible)

Support the year-round ministry of Luther Park by Purchasing Raffle Tickets for your chance to win 1 of 2 beautiful quilts. A Book of 5 tickets for \$20.00 Or 1 ticket for \$5.00. Tickets can be purchased through our online store by visiting our website lutherpark.org, camp store or at the camp office.

From the desk of Kellee Petik, Development Director, Luther Park Bible Camp:

Hi there,

I hope you are enjoying summer. Well, the most that you are able to!

Here is the link for our August camp newsletter: <https://conta.cc/3jLsUCg>.

Thank you for your continued support of Luther Park during these times, we truly appreciate your partnership!!

COMMUNITY EVENTS/OPPORTUNITIES



Ruby's Pantry Food Distribution Saturday, August 8th 7:30—10 a.m.

Will be held at the Elk Mound High School parking lot (405 University Ave., Elk Mound, WI). **We are looking for volunteers** to assist with this distribution. If you haven't volunteered yet in 2020, you need to register as a volunteer at: <https://www.rubyspantry.org/become-volunteer>.

What does it take to get food at this distribution? No paper registration, only a \$20 cash donation is needed for 1 share of food, and more than one share can be purchased.

It is necessary to have cleared space in the trunk of your vehicle so volunteers can easily place the food in your vehicle.



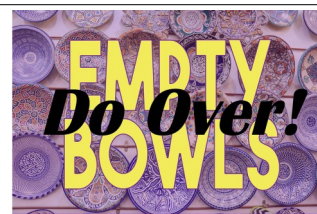
2020 Virtual Garden Tour is now available online!

The big day has finally arrived for the debut of Stepping Stones' first-ever **free** virtual garden tour!

No tickets are being sold, but a donation – as viewers are able – will be very much appreciated to help fund Stepping Stones' mission of providing food, shelter and support to those in need. If you'd like to make an online donation, please [Click Here](#) **or** mail your donation to: Stepping Stones, 1602 Stout Rd., Menomonie, WI 54751

Choose from Facebook or Vimeo (which is like YouTube) to view five resplendent local gardens complete with commentary and without leaving the comfort your lawn chair, hammock, recliner or couch. The links can be found here:

www.steppingstonesdc.org



'Empty Bowls' now on sale at Menomonie Farmers Market

Empty Bowls' bowls, quilts & afghans are currently being sold at a Stepping Stones' booth at the Farmers Market at Wilson Park while supplies last. Remaining dates are **Saturday, July 25 and Aug. 1, 8 am.-1 p.m.** as well as **Wednesday, July 29, 10 a.m.-6 p.m.** Bowls are \$10 each while quilts and afghans are priced as marked.

As we try to find creative ways to do fundraising during these challenging times, we're SO grateful for the faithful support of our caring community.

COMMUNITY EVENTS/OPPORTUNITIES



Thrift & Quilt Sale

Thursday, August 13,
4 p.m. to 7 p.m.


Friday, August 14,
8 a.m. to 4 p.m.

Saturday, August 15,
9 a.m. to 1 p.m.

Christ Lutheran Church
1306 Wilcox Street
(the church with the purple doors in north Menomonee)

CANCELLED

Give blood.
Every 2 seconds someone in the U.S. needs blood.
American Red Cross



Blood Drive

Christ Lutheran Church
1306 Wilcox St.


Tuesday, August 18, 2020
12:00 p.m. to 6:00 p.m.

Please call 1-800-RED CROSS (1-800-733-2767) or visit RedCrossBlood.org and enter: Menomonee Christ Lutheran to schedule an appointment.

Come to give August 1-31 and you'll automatically be entered for a chance to win a trip for four to Cedar Point or Knott's Berry Farm! Includes travel, hotel, park admission and more! Terms and conditions apply, visit rcblood.org/CedarFair for details.

1-800-RED CROSS | 1-800-733-2767 | redcrossblood.org | Download the Blood Donor App
©2019 The American National Red Cross

1031_Outer 01 120512L Rev 10 145209 09/11/14 07/30/2020 2019-09-03 2017 2017 1



Volunteers Needed!

Hope Bargain Center Menomonee

Serve behind the scenes sorting & processing merchandise.
Make a difference in the lives of the homeless.

Volunteers receive a 20% discount on merchandise at Hope Gospel Bargain Centers.

For more information contact
Linda Velie - Volunteer Coordinator
715-491-0905
lindav@hopegospelmission.org

To join our team visit @ www.hopegospelmission.org

HEALTH MINISTRY

Dear Family of OSL from Amy Whelan, Parish Nurse,

Our Lord created us in His image and enabled us to share our gifts with one another. (Gen, 1:26-27; Rom.12:4-8. Volunteers—What would OSL do without you?

You are the glue that holds our mission together. Take a moment and think of all the hours and years you have committed to volunteering at OSL. It is rare that any member has not been a volunteer at some time in their life at OSL. Thanks be to God for sharing your gifts.

Our assigned visitation and pastoral care team members are: Mary Bensen, Bob and Kathy Hirsch, Diane Brown, Martha Wallen, Gayle Holte, Shari Homstad, Loren Barker, Becky Kneer, and Amy Whelan. “Caring ministry” involves a wide variety of actions. Sometimes, a church thinks of it only as “taking communion to shut-ins.” That is certainly an important part of it. But our visitors do more than that.

Another important part of their ministry involves bringing the fellowship of OSL community to those who can’t physically join with us –reminding them that their relationship with OSL remains unbroken. Sometimes a person chooses not to receive the sacrament. Our visitors can still bring news of church or community events, offer companionship to people who might otherwise spend their days silently alone. They bring the message by their calling on the phone, LISTENING, gentle, kind words, Scripture and prayer. Their deeds and physical presence shows that we still care about those who can’t be with us- that they still matter to us and God.

We are made for one another; we are made for community. We are called to love one another as Christ loves us. Often our visitors tell me that they receive as much joy and fellowship as they provide to the people with whom they visit. When we give undivided attention and listen more than we speak, we offer respect, genuine love, and concern. So, our caring ministry team is more a matter of “walking with” others that “reaching out” to others. Because of Covid-19, our nursing homes and assisted living facilities cannot allow anyone to visit in person or even come to an outside window to visit through the screen. Talk about isolation and loneliness! One person whom I call at least two to three times a month in a local nursing home said to me, “I now know what it is like to be in a prison cell. The only difference is the entrance door to my room/cell is not made of bars but wood.” It broke my heart! Please send cards to our residents in these facilities as well as pray for them and their families who suffer along with their loved ones

Also, with the closure of the church building since March, we organized several calling lists to touch base with several members living alone in their homes or those with possible conditions where some outside help may be needed. This has been a large undertaking but one of the best ways of listening to the stories of these treasured members of OSL. We have had several other volunteers, 10-12 of us, help with these calls, stopping by their homes, running errands, taking people to appointments, sending cards, letters, emails, etc. We have NEVER stopped being the church because the building is closed. We are still part of God’s family—all of us! We are blessed to be a blessing to and for each other!

Our Loving God has gifted each of us in special ways and invites us to share ourselves with others. I would encourage you to consider sharing some of your knowledge, skills, and interests with others. If you have an interest in this caring service, please call me-Amy at 715-495-1178 or Becky. I would enjoy listening to your story.

We pray: Merciful Lord, here we are, listening to your word and waiting for your command. Forgive us when we seek to be served rather than serve. Help us believe that we are enough to follow you because you chose us to do your will with the gifts you gave us. Praise and thanks for being our “I AM”—You are enough, Oh God! Amen!

In Christ’s love,

Amy Whelan, Parish Nurse

amy@oslme.com

HEALTH MINISTRY Cont.

Below is a poem written by Jane Bahr which I found very moving and would like to share with you.

After reading Jane's poem, I was reminded of God's compassion and hope as we WAIT during this Locked Down pandemic with the following promise:

"They who WAIT for the Lord shall renew their strength. They shall mount up with wings like eagles. They shall run and not be weary. They shall walk and not faint." Isaiah 40:31

Amy Whelan, Parish Nurse

LOCKED DOWN

by Jane-Marie Bahr

I am cloistered in my house,
reading books on mystical prayer;
how did the saints cope? Did they
thrive in their self-imposed exile?

I venture out for food and supplies,
wear a mask, take note of those
who refuse to,
wondering why they
can act cavalierly?

Stats of disease rise and rise.
I take tally of the sick, the dying,
and the dead,
state by state, city by city, county
by county, and shout, "Will it end?"

Living isolated overwhelms me—I
want things to be back to what was
and could be.

And I wait.



Jane-Marie Bahr, a member of OSL, lives on the edge of a marsh outside of Menomonie. She delights in seeing pheasants, cardinals, gold finches, and bluebirds in her yard.

When not reading or writing, she tends to her late husband's perennial box gardens.

Her poems have been published in *Blue Heron Review*, *Red Cedar Journal*, *Verse Wisconsin*, *Wisconsin People and Ideas*, *Hummingbird*, *Free Verse*, *Poetry Motel*, *Wallpaper Broadside Series*, *Poesy*, *the Museletter*, *Wisconsin Poets' Calendars*, and *Poetry Out of Wisconsin*.

Bahr earned a MST degree from UW-Whitewater and taught high school English at Whitewater, Eau Claire Memorial, and Glenwood City summer sessions.

She is a recipient of a Wisconsin Arts Board Travel Grant and a WRWA Soar Scholarship. She is currently writing a novel, *From the Altar*.

NEW! Health Ministry E-News

If you would like to receive (including health news from OSL, our community and beyond), via email every 1-2 weeks, email becky@oslme.com to request. Opt-in required; opt-out at any time.

PRAYER SHAWS

Prayer shawls are available & plentiful. Contact the church office to arrange to pick one up. Consider for members, family, friends.

CHURCH COUNCIL MINUTES

Our Savior's Lutheran Church

July 14,, 2020

6:00 OSL Fireside Room

Opening Devotion/Sharing

- Pr. Sarah shared a prayer

Old Business

- A. Call to order at 6:11pm
- B. Attending: Pastor Sarah Miller, and Pastor Heather Wigdahl, Paul Horvath, Sarah Place, Diane Hausler, Marni Waznik, Dan Krueger, Rod Smeltzer; **Excused:** Jeff Vick, Sam Weaver, and Roxie Close
- C. Approval of June Minutes
 - a. Motion to approve from Heather, 2nd from Sarah
 - b. Financial Report
 - i. Extended the repayment period but continue to revise the paperwork that needs to be done to have our loan forgiven. We will be using all of our money in an appropriate way to avoid any future payments
 - ii. OSL finished the month \$32,430.299 in income set against \$7,778 of expenses. This leaves us with \$52,626. If we didn't have the PPP we would still be about \$2000 ahead of budget/expense so giving is holding strong despite no in person worship.
 - iii. Waiting on information from Clifton Allen on how to appropriately handle the Greatest Need account.
 - iv. PPP should be used up at the end of the next payroll
 - v. There is a mutual fund in OSLs name from the estate of Maggie Johnson. Mark Kalscheur, Treasurer at Our Saviors Lutheran, has the Council approval to work with the Raymond James Rep to close the account and have it dispersed to OSL. Motion made by Paul to put in an OSL savings account. 2nd by Rod.
 1. Discussion - Paul: Is savings the best place to put right now or should it go to some larger project. Heather: Could be used for sanctuary perhaps for lights? Rod: Put in savings now and then discuss later. Sarah: Talked with the family and they did not have any specific request for how the money was spent. Motion passes.
 - vi. Motion to accept financials made by Dan. Marni seconds. Motion passes.
- D. Pastor Heather's Report
 - a. Working on getting the camera installed contacted Audio Architects to help solve a buzz noise in the worship. Hope that the fix will work.
 - i. \$3000 grant from the synod to help cover the cost of the technology expenses. Also received a donation from a member for \$1000 in gratitude for providing the remote worship offerings.

(Continued on page 13)

CHURCH COUNCIL MINUTES *Cont.*

(Continued from page 12)

- ii. Met with Dave Bergstrand to discuss more permanent installation in the balcony. Would like to give permission to the Property Committee to reconfigure the desk/sound area to accommodate additional computers, and move the whole desk away from the banister with the hopes to provide better access to the wires and cables. Council approved to ask Property to look into options for making that space work better. Property will come with a plan for council approval once ready
 - b. Renovation of welcome space. Asking the council to approve the removal of wallpaper and paint white. Requesting that the office staff is able to use their time to do this work.
 - i. Motion made by Dan, 2nd by Paul, Motion passes.
 - c. Backpacking trip is still happening. All precautions are taking place for the group. She will be gone until July 27th. Pr. Sarah will cover in the meantime.
- E. Pastor Sarah's Report
- a. Thanks to everyone for the email approval of the Con-Ed opportunity. Waiting on decisions on money and format of retreats to come in the near future
 - b. Hosting weekly prayer and scripture service on Wednesday mornings.
 - i. Invited to read the book *Waking up White*, by Debbie Irving and will hold discussion.
 - c. Looking to the fall to figure out what the education will look like
 - d. Working on accommodating small group Baptisms, Weddings, and Funerals

New Business

A. Committee Reports

1. Worship: Continue to worship with recorded worship services. Pr. Sarah is hosting a weekly prayer by Zoom on Wednesday. Will explore opportunities for outside prayer gatherings. Nothing currently planned. Lots of conversations with other partners about a few different ideas. Worship committee outside of the Pastors and Michaela are not currently meeting. Hoping for worshipping in person this fall.
 - a. Marni: Do we have an idea of how we might start creating some opening phases looking at criteria with COVID numbers etc
 - i. Pr. Heather: Some conversations are starting. It would be helpful to have a small group of leaders to help set some parameters
 - ii. Pr. Sarah: Hope to continue to provide the worship experience that is an hour long (needed for the radio broadcast). Conversations about what worship looks like (what is safe, singing, speaking in unison). Those are hard questions to answer. Is the recorded version different from Sunday in person worship? Lots of good questions but not lots of answers.

(Continued on page 14)

CHURCH COUNCIL MINUTES Cont.

(Continued from page 13)

- iii. Pr. Heather: wants to get the worship committee together in August with the addition of Marni to start discussing opening options. Pr. Sarah will set up a meeting time early August so we can have an update for our next meeting.

2. Youth and Family: Met via Zoom. Sunday school, intent not to return to Sunday School until in person worship is happening for a few weeks. Will start with sharing emails with families initially similar to the spring. Still need to confirm students from last year. Hoping to do it on Reformation Sunday in October. Talked about changes to how to hold Confirmation classes in person: Shorter time, use sanctuary, alternate grade levels. Waiting on the school districts decision regarding the fall as well. Talked a bit about a high school youth group. Shannon Mason shared as a HS student the "Zoom fatigue" would prefer a face to face option. Talked about a Sunday option for youth groups to bring students together in worship. Registration letter for Sunday School and Confirmation would usually be going out right. Will reach out with some information but not ask for a family donation to participate. There is money left from last year to help cover the costs.

3. Personnel: Planning for an exit interview with Kelly.

4. Property Management: Nothing to report

5. Mission Endowment: Nothing to report

6. Health Ministry: Becky planning a Taizé service for healing, Speakers planned for 3rd Sunday presentations Sept-Jan more to come on that. Mayo is considering staffing a chaplain at the hospital.

7. MOOW: Nothing to report

8. Technology: Nothing to report

B. Lords Prayer

C. Adjourn Moved by Paul, 2nd Pr. Sarah 7:38

D. Next regular Council meeting is August 11, 2020

Minutes taken by Diane Hausler, July 14, 2020

JULY MEMORIALS & SPECIAL GIFTS

In Memory of Maggie Johnson:

Electronic Outdoor Sign: Judy Kirk

General: Robert & Janice Willow

Radio Broadcast: Dorice Nelson

In Memory of Steve Terry:

Electronic Outdoor Sign: Judy Kirk

General: Larry & Carolyn Barnhart

Greatest Needs: Mark & Elizabeth Forster

In Memory of Jeannette Breckner:

Electronic Outdoor Sign: Judy Kirk

General: Robert & Janice Willow

Radio Broadcast: Dorice Nelson

In Memory of Gwen Lecander:

Electronic Outdoor Sign: Mike & Sally Schendel

In Memory of Mary Anderson:

General: Robert & Janice Willow

In Memory of Mary Langford:

Radio Broadcast: Dorice Nelson

In Memory of Luther Mikkelsen:

Radio Broadcast: Robert & Janice Willow

Special Gift:

Electronic Outdoor Sign: Verla Haney

In Memory of Trevor Eade:

Greatest Needs: Mark & Robin Johnson

RADIO BROADCAST SPONSORSHIPS

8/16/2020 In Memory of Joan Keller & Deanna Applehans

Sponsored by: Hank & Marge Kunkel

**8/30/2020 In Honor of Luther Mikkelsen's 55th Birthday
(which would have been on August 27th)**

Sponsored by: Pr. John and Muriel Mikkelsen

Many people choose to sponsor a particular week's radio broadcast in honor or memory of a celebration or individual. If you would like to **sponsor a radio broadcast**, please contact the [church office](#).

OSL INFORMATION

JULY BAPTISMS

Ms. Rachel M. Kromrey
7/5/2020

Soren Mary-Kathryn Miller
7/26/2020
Ryan & Britta Miller

Lydia Lois Weiss
7/26/2020
Jared Weiss & Samantha Hoff

ADDITIONS TO ADULT LIBRARY

Shameful!
Donated by Nancy Bjornson

New & Old Testament on CD's
Donated by Harvey Hintzman

SYMPATHY TO

The family of
Gwendolyn Lecander

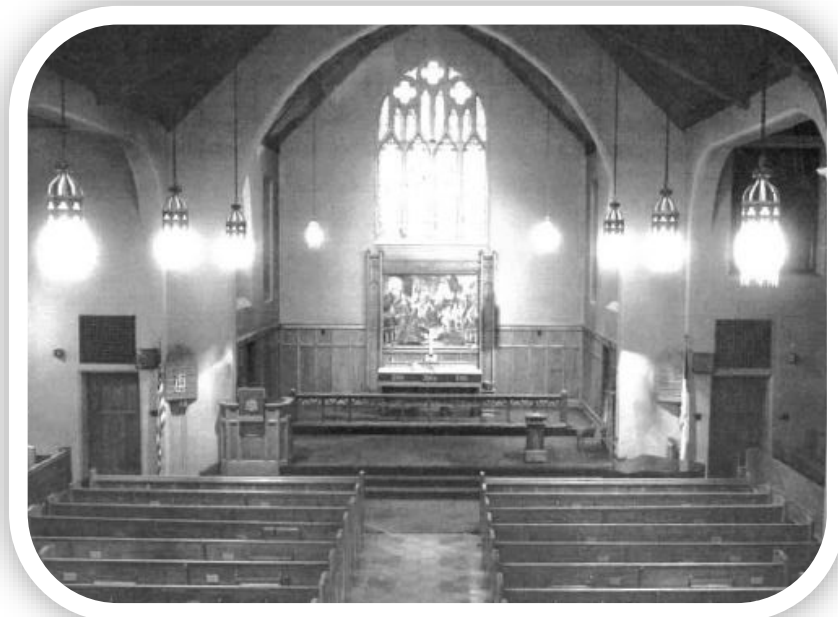
OSL HISTORY NUGGET

As early as 1921, it became apparent that the rapidly growing congregations of the merged Norwegian Lutheran Churches needed more space and therefore a new place to worship. A resolution was passed that the new church would replace the old, now unoccupied structure on the corner of 9th Ave. and 10th St. By 1929, \$30,700 had been raised — this in the midst of a worldwide depression.

At a cost of about \$50,000, including the cost of the organ and furnishings, the current church was dedicated on a rainy Oct. 19, 1930.



Our Savior's Lutheran Church (1930)



The sanctuary is built in the shape of the cross with the transepts forming the arms and the chancel being the head.

Baptismal Family Meeting

Please call the church office at 715-235-0693 or email office@oslme.com to schedule a baptism.

If you have “contribution” questions, contact Bonnie Christianson at: contributions@oslme.com

If you have “billing” questions, contact Kim Studinger, please email her at: bookkeeper@oslme.com

If you would like to “volunteer” on Sunday mornings, contact Janell Evan at: janell@oslme.com

If you have an “announcement” for the Bulletin or Scope, contact Bonnie Christianson at: bonnie@oslme.com

Giving Envelopes

If you are out of giving envelopes, let the office know. We can easily print more. If your offering is in a plain envelope, please make sure you write your name and number on it so you receive credit.

Electronic Giving

[Online giving](#) is available on OSL’s website.

Whether you’re a member, a visitor or a friend, you’re able to make regular contributions, a special one-time donation, or a memorial gift online using your debit or credit card.

As a way to celebrate your online Simply Giving, use the brightly colored giving cards (located in the pew racks) during the offering collection.

OSL now has a QR (Quick Response) Code:



Give directly using the QR Reader app on your device!

STAFF

(715) 235-0693

Senior Pastor: Rev. Heather T. Wigdahl
heather@oslme.com, Ext. 203

Associate Pastor: Rev. Sarah L. Miller
sarah@oslme.com, Ext. 204

Pastor Emeritus: Rev. Don Wisner
don@oslme.com

Bookkeeper:
Kim Studinger, bookkeeper@oslme.com, Ext. 202

Contributions:
Bonnie Christianson, contributions@oslme.com, Ext. 202

Director of Youth Ministry:
Ext. 206

Director of Children’s Ministry:
Denise Vick, denise@oslme.com, Ext. 205

Health Ministry/Parish Nurses:
Becky Kneer, becky@oslme.com, Ext. 207
Amy Whelan, amy@oslme.com, Ext. 207

Administrative Assistants:
Janell Evan, janell@oslme.com, Ext. 201
Bonnie Christianson, bonnie@oslme.com, Ext. 201

Directory of Music Ministry:
Michaela Gifford, michaela@oslme.com, Ext. 216

Custodian:
Josh Madsen, custodian@oslme.com, Ext. 217

OSL Choir Director: Michaela Gifford

Youth Choir Director: Emily Hansen

Bell Choir Director: Merlyn Aude

Worship Band Leader: Ted Bensen

Wedding Coordinator: Michaela Gifford

CHURCH COUNCIL MEMBERS

President: Roxanne Close	Sarah Place
Vice President: Diane Hausler	Dan Krueger
Secretary: Sam Weaver	Treasurer: Mark Kalscheur
Paul Horvath	
Rod Smeltzer	
Jeff Vick	
Marni Waznik	

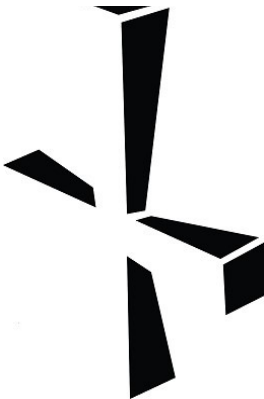


Our Savior's Lutheran
910 Ninth Street
Menomonie, WI 54751

RETURN SERVICE REQUESTED

Our Savior's Lutheran
910 9th Street
Menomonie, WI
(715) 235-0693
office@oslme.com
www.oslme.com

Contact Us



OUR MISSION

God calls all members of Our Savior's Lutheran to:
+WELCOME all to faith in Jesus Christ
+WORSHIP our Lord and Savior
+EQUIP us for a faith that works in real life
+SEND us into the world to minister in Jesus' name